

OpenCV for camera positioning

Draft v3, 28 Jan 2011

Reznichenko Vladimir

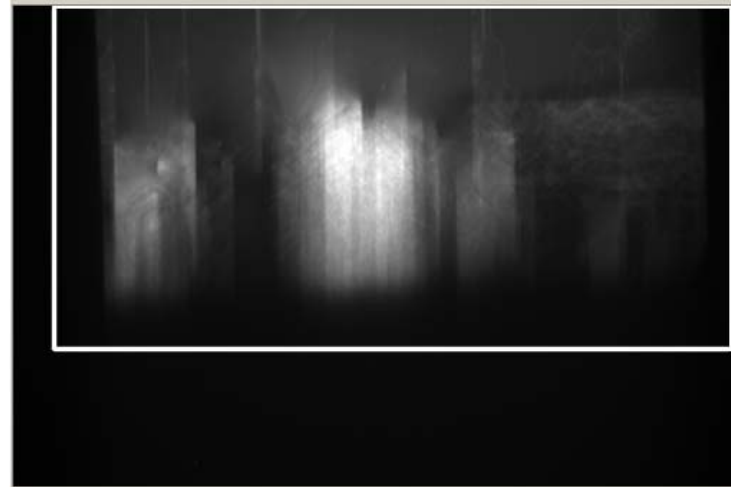
ISS KIT

Mass center based method

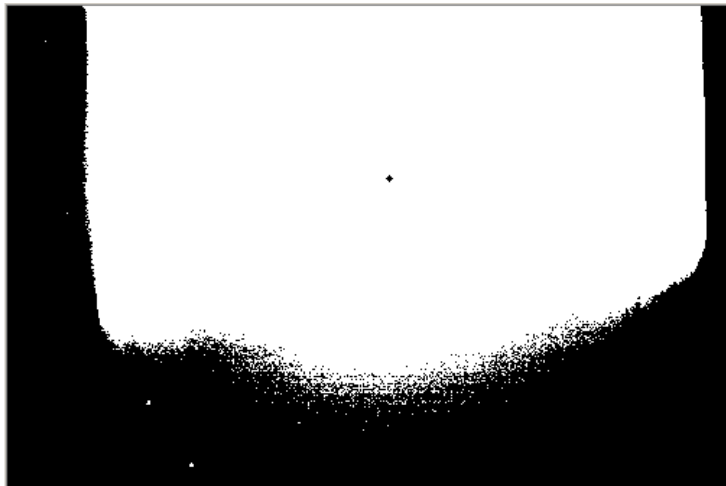
- Can be used for camera calibration also
- Independent of brightness changes
- Independent if sample structure changes

First results (15-Dec-2010): Picture 1

A bit old pictures



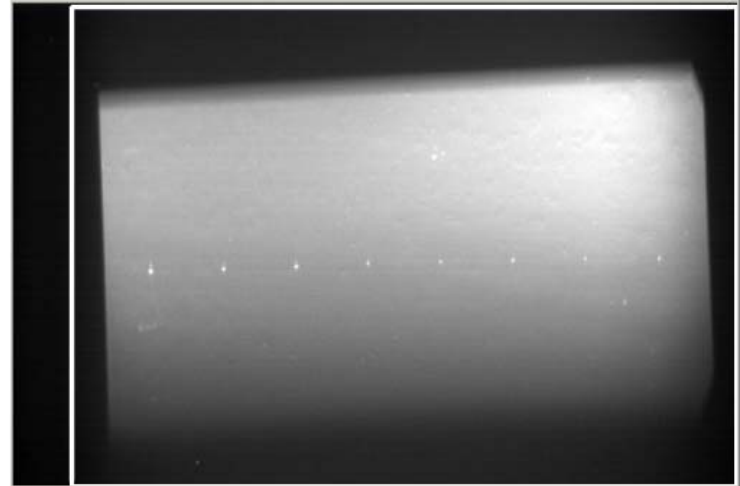
Resized & Marked



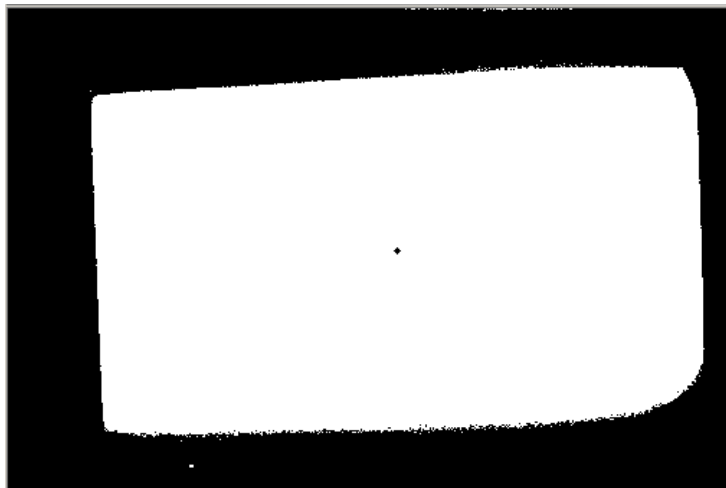
Resized & Threshold

First results (15-Dec-2010): Picture 2

A bit old pictures



Resized & Marked



Resized & Threshold

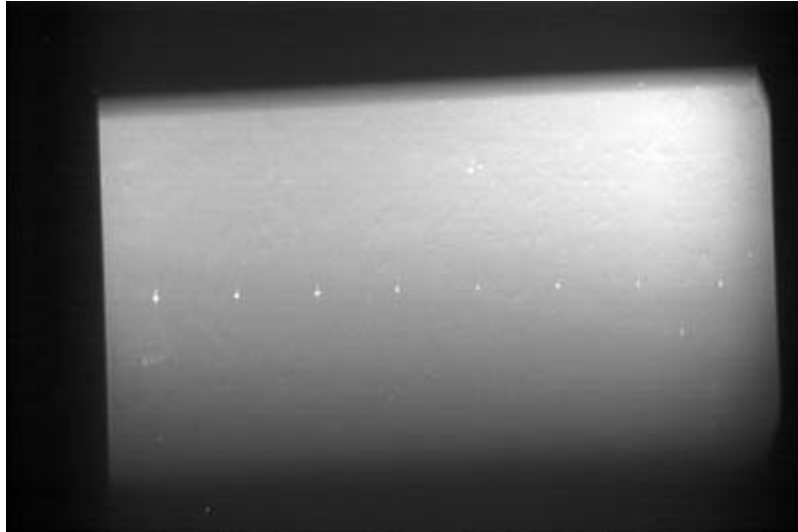
FFT based

- Not stable in case of changing brightness.
- Refused of using it

Template match

- Works for changing brightness
- Seems to be weak dependent of sample structure changes

Results (27 January 2011)



White rectangle is on image border
(no shift)

White rectangle moved up and 1
pixel right (shift is detected)

